

# ZERMA

## THE HOME OF SIZE REDUCTION

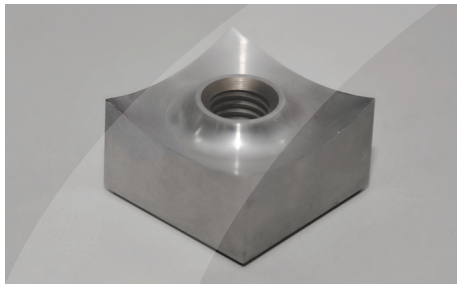
Shredders // Granulators // Pulverizers // Attachments

ZBS // ZIS // ZSS // ZRS // ZTS/ZTTS // ZWS // ZXS

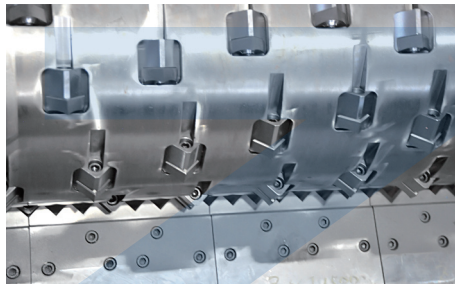


## ZIS

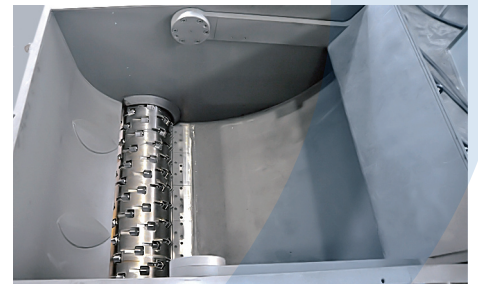
### SHREDDER FOR VOLUMINOUS PARTS



The shredders use concave ground square knives, producing high quality output. The cutters can be turned after a side is worn out.



All ZERMA shredders are equipped with a large diameter flat rotor. The knives are fixed in special knife holders fitted in machined pockets. Optional weld on hard facing is available for abrasive applications.



The internal ram design on the ZIS series allows the cutting chamber volume to be increased while keeping a small footprint. Making the ZIS ideal for shredding of big volume parts.

## GENERAL DESCRIPTION

The ZIS series shredders are single shaft shredders with a large internal volume. The redesigned hydraulic pusher system creates approx 35% more space in the cutting chamber while increasing the power and speed of the ram itself. The machines are equipped with a 457 mm diameter ZERMA E rotor with widths ranging from 1200mm to 2000 mm. As on the ZSS machines, the rotor is driven via an oversized gearbox. The completely enclosed welded steel housing increases the stability and avoids material spillage. The ZIS incorporates all the traditional advantages of the ZERMA knife and knife holder design as well as standard features such as outboard bearings, hydraulic screen cradle, easy maintainability and advanced controls.

## APPLICATIONS

The ZIS shredders have been designed to handle voluminous parts such as IBCs, wheelie bins, pallets, large drums etc but also retain the versatility and flexibility to be used for general recycling in the plastic and wood industry. As with all ZERMA shredders, the ZIS range can be equipped with a wear package for the processing of highly abrasive, filled materials.

## ADVANTAGES

- **35% more internal volume compared to the ZSS series**
- **Internal hydraulic pusher (ram)**
- **Variable speed, faster pusher movement**
- **Smaller footprint compared to traditional horizontal pusher style shredders**
- **enclosed cutting chamber to avoid material spillage**
- **all advantages of the conventional ZSS series**

ENGLISH

PLASTIC SIZE REDUCTION  
RUBBER SIZE REDUCTION  
WOOD SIZE REDUCTION  
E-WASTE SIZE REDUCTION



# ZIS SHREDDER FOR VOLUMINOUS PARTS



PLASTIC  
SIZE  
REDUCTION

WOOD  
SIZE  
REDUCTION

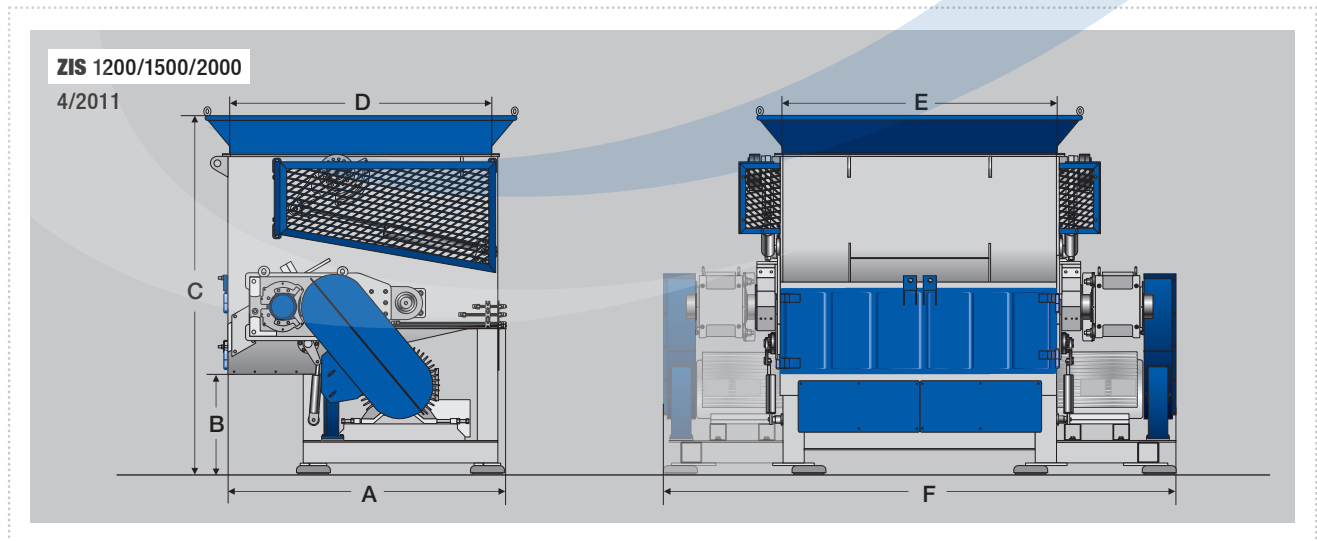
ZERMA. THE  
HOME OF SIZE  
REDUCTION



## SPECIFICATIONS

Type ZIS	1200	1500	2000
Rotor diameter (mm)	457	457	457
Rotor width (mm)	1200	1500	2000
Rotor speed (rpm)	74	74	74
Drive capacity (kW)	55	75	2 x 55
Rotor knives (pcs)	81	102	144
Stator blades (rows)	1	1	1
Ram feeder drive (kW)	5.6	5.6	5.6
Screen size (mm)	>20	>20	>20
Cutting chamber volume (m <sup>3</sup> )	2.15	2.7	3.75
Effective working area (mm)	1400 x 1010	1400 x 1290	1400 x 1850
A (mm)	2070	2070	2070
B (mm)	725	725	725
C (mm)	2600	2600	2600
D (mm)	1880	1880	1880
E (mm)	2320	2635	3710
F (mm)	1140	1420	1980

## DIMENSIONS



Subject to technical modification